

JUTA GP[®] 4 - Gas Barrier is a multi-layer, low-density polyethylene membrane, Reinforced with a polypropylene reinforcing grid. GP[®] 4 is specifically Designed and manufactured to perform as a Radon, air & Moisture protection System, as well as low level protection to Carbon Dioxide and Methane



JUTA GP [®] 4			
Characteristics	Test Method	Unit	JUTA GP [®] 4
Physical Properties			
Thickness	EN 1849-2	mm	0.6
Width	EN 1849-2	m	Various
Length	EN 1849-2	m	Various
Weight	EN 1849-2	G/M ²	400
Hydraulic Properties			
Water Column	EN 20811	-	Pass
Water Vapour Transmission - Moisture resistance factor	EN 1931	m	130
Water Tightness	EN 1928 (A)	-	Pass
Hydraulic Properties			
Resistance to Static Load	EN 12730-B	Kg	20
Tensile Strength (MD)	EN 12311-1	N/50mm	600
Tensile Strength (CMD)	EN 12311-1	N/50mm	570
Tensile Elongation (MD)	EN 12310-1	%	15
Tensile Elongation (CMD)	EN 12310-1	%	15
Puncture Resistance	EN 12236	kN	1.25
Resistance to Tearing (Nail Shank) MD	EN 12310-1	N	500
Resistance to Tearing (Nail Shank) CMD	EN 12310-1	N	500
Gas Permeability			
Radon diffusion co-efficient (D)	K124/02/95	m ² /s	1.7 x 10 ⁻¹¹
Compliance and Certification			
CE Mark - EN13967:2012			
NHBC Standards Compliant			
BBA Certified - Certificate No. 20/5728 (P5)			



Additional Information

HANDLING

Roll weights can be in excess of 20kg and hence appropriate care and equipment is required for unloading and handling.

STORAGE

Rolls of JUTA GP® 4 should be stored on stable/level ground and stacked not more than five rolls high, with no other material stacked on top. The rolls can be stored outdoors when packaged, but should be protected from exposure to UV.

INSTALLATION

JUTA GP® 4 should be installed in accordance with the product installation guidelines, and in accordance with best practice.

JOINTING AND SEALING

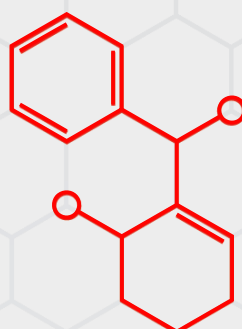
JUTA GP® 4 can be heat welded or taped, with jointing carried out by competent personnel with suitable qualifications in accordance with best practice. JUTA GP® 4 should be overlapped by at least 100mm. If taping joints, only suitable tape must be used, ensuring application with a silicone roller to remove trapped air. JUTA pre-formed details, or Self Adhesive Gas Membrane are available for sealing around protuberances.

ACCESSORY PRODUCTS

-  JUTA GP® DPC
-  JUTA GP® Tape
-  JUTA GP® Self Adhesive Membrane (SAM)
-  JUTA GP® Primer
-  JUTA GP® Top Hats and Preformed Corners
-  JUTA GP® Protection Fleece
-  JUTA GP® Void Vent (25/40mm)

PLEASE CONTACT JUTA UK DIRECTLY FOR MORE INFORMATION ON JUTA GP® 4

Contact us to find out more information.
info@juta.co.uk | 01772 754177 | JUTA.CO.UK
Melton Grove Works, Church Road, Lytham, FY8 5PL



JUTA



riba
product
selector