

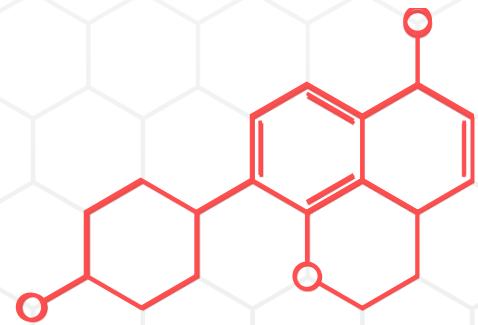
GP® TITANTECH DPC

Rev: June 2019

Ground Gas Protection

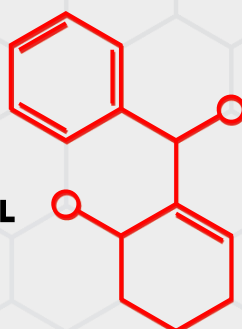
GP® TITANTECH DPC - Gas and Hydrocarbon Resistant DPC is a unique single layer, embossed High Performance DPC. GP® TITANTECH DPC is specifically designed and manufactured to perform as a Methane, Carbon dioxide, VOC, Radon & Moisture resistant damp proof course.

GP® TITANTECH DPC complies with the latest codes of practice as published by BRE, CIRIA and BSI (BS EN 14909, BS8485:2015 and C748). Suitable for use as a High Performance DPC for vertical and horizontal applications. Superior adhesion to mortar is essential for buildings of 3+ storey height.



GP® TITANTECH DPC - GAS and HYDROCARBON DPC			
Characteristic	Test Method	Unit	GP® TITANTECH DPC
Physical Properties			
Thickness	EN 1849-2	mm	1.0
Width	EN 1849-2	M	1.3
Length	EN 1849-2	M	20
Weight	EN 1849-2	g/m ²	921
Hydraulic Properties			
Water Vapour Permeation	EN 1932	g/m ² /day	0.08
Resistance to water penetration	EN 13967, EN 1928	-	PASS
Watertightness	EN 1928	-	PASS
Mechanical Properties			
Resistance to Static Load	EN 12730 - B	Kg	20
Tensile Strength (MD)	EN 12311 -1	N/mm ²	24
Tensile Strength (CMD)	EN 12311 -1	N/mm ²	22
Tensile Elongation (MD)	EN 12311 -1	%	398
Tensile Elongation (CMD)	EN 12311 -1	%	446
Puncture Resistance	EN 12236	kN	1.25
Resistance to tearing (nail shank) MD	EN 12310 - 1	N	700
Resistance to tearing (nail shank) CMD	EN 12310 - 1	N	750
Durability and Chemical Resistance			
Transmission rate of volatile liquids - Diesel	ISO 6179:2010 (B)	g/m ² /h	0.096
Transmission rate of volatile liquids - Xylene	ISO 6179:2010 (B)	g/m ² /h	4.845
Transmission rate of volatile liquids - Toulene	ISO 6179:2010 (B)	g/m ² /h	6.695
Transmission rate of volatile liquids - Petrol	ISO 6179:2010 (B)	g/m ² /h	5.172
Heat Ageing	EN 1926	-	Pass
Chemical Resistance	EN 1847	-	Pass
Resistance to Fire	EN 13501-1	Class	F
Resistance to Low Temperature	EN 495-5	-	Pass @ -40°C
Gas Permeability			
Methane Permeability	BS EN ISO 15105 - 1	ml/m ² /day/at m	28
Carbon Dioxide Permeability	BS EN ISO 15105 - 1	ml/m ² /day/at m	<28
Radon Permeability	K124/02/95	m ² /s	9.5 x 10 ⁻¹²
Compliance and Certification			
CE Mark - EN13967:2012			
NHBC Standards Compliant			
BS EN 14909:2012 Compliant			
BS 8485:2015 Compliant			

Contact us to find out more information.
info@juta.co.uk | 01772 754177 | JUTA.CO.UK
 Melton Grove Works, Church Road, Lytham, FY8 5PL



JUTA



riba
product
selector

Additional Information

Characteristic Shear Strength	
Pre-Compression (N/mm ²)	Characteristic Shear Strength (N/mm ²)
0.2	0.14
0.6	0.34
1.0	0.52

JUTA GP® TITANTECH DPC has an embossed surface to create superior mortar adhesion which is essential when being used in 3+ storey applications. JUTA GP® TITANTECH DPC is compliant to BS EN 14909:2012 and can be used in both vertical and horizontal applications.

HANDLING

Roll weights can be in excess of 5kg and hence appropriate care and equipment is required for unloading and handling.

STORAGE

Rolls of JUTA GP® TITANTECH DPC should be stored on stable/level ground and stacked not more than five rolls high, with no other material stacked on top. The rolls can be stored outdoors when packaged but should be protected from exposure to UV. JUTA GP® TITANTECH DPC is classified as non-hazardous and is chemically inert such that it will not react with any acid or alkali environment in which it is used.

INSTALLATION

JUTA GP® TITANTECH DPC must be installed in accordance with the guidelines laid out in BS8215:1991, BS8000: part 3 and BS 5628. It can be used in most common floor constructions and is installed in a similar manor to damp proof membrane. For external walls the DPC should be applied 150mm above the adjoining surface and should be linked to a DPM or Gas Resistant DPM in solid floors. The DPC should be applied to a fresh bed of mortar, completely free of projections that may puncture the material or impede the DPC from lying flat.

JOINTING AND SEALING

Sheets of JUTA GP® TITANTECH DPC must be clean, dry, and free from dirt and grease before application of jointing tape. JUTA GP® DPC may also be heat welded to the underlying Gas resistant membrane.

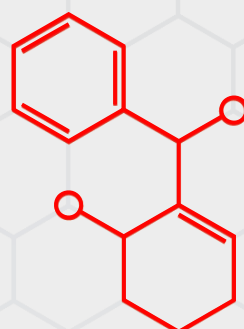
ACCESSORY PRODUCTS

JUTA GP® TITANTECH DPC is an accessory product for use in combination with GP® 1, GP® 2, GP®H GP®SAM, and GP® TITANTECH gas protective membranes. It is also compatible with a range of DPM and other DPC materials.

ADDITIONAL INFORMATION

For additional information or assistance, please contact JUTA UK directly.

Contact us to find out more information.
info@juta.co.uk | 01772 754177 | JUTA.CO.UK
 Melton Grove Works, Church Road, Lytham, FY8 5PL



JUTA



riba
product
selector