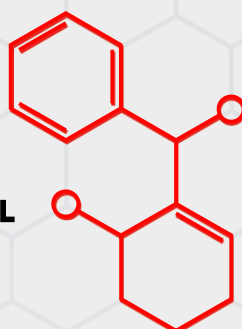




Juta GP[®] 1 - Proprietary Gas Resistant Damp Proof Membrane (DPM) is a multi-layer, low density polyethylene membrane, reinforced with a polypropylene reinforcing grid with an integral aluminium foil. GP[®] 1 is specifically designed and manufactured to perform as a Methane, Carbon Dioxide, Radon, Ground Gas, air & moisture protection system.

JUTA GP [®] 1			
Characteristics	Test Method	Unit	JUTA GP [®] 1
Physical Properties			
Thickness	EN 1849-2	mm	0.6
Thickness - Between Scrim	BS EN ISO 9863-1:2016	Mm	0.4
Width	EN 1849-2	m	Various
Length	EN 1849-2	m	Various
Weight	EN 1849-2	G/M2	370
Hydraulic Properties			
Water Column	EN 20811	-	>300
Resistance to Water Penetration	EN 13967, EN 1928	-	Pass
Water Tightness	EN 1296, EN 1367, EN 1928	-	Pass
Mechanical Properties			
Resistance to Static Load	EN 12730-B	Kg	20
Tensile Strength (MD)	EN 12311-1	N/50mm	600
Tensile Strength (CMD)	EN 12311-1	N/50mm	480
Tensile Elongation (MD)	EN 12310-1	%	20
Tensile Elongation (CMD)	EN 12310-1	%	20
Puncture Resistance	EN 12236	kN	1.25
Resistance to Tearing (Nail Shank) MD	EN 12310-1	N	330
Resistance to Tearing (Nail Shank) CMD	EN 12310-1	N	400
Durability and Chemical Resistance			
Transmission Rate of Volatile Liquids - Diesel	ISO 6179:2010 (B)	g/m ² /h	0.246
Transmission Rate of Volatile Liquids - Xylene	ISO 6179:2010 (B)	g/m ² /h	0.571
Transmission Rate of Volatile Liquids - Toluene	ISO 6179:2010 (B)	g/m ² /h	0.583
Transmission Rate of Volatile Liquids - Petrol	ISO 6179:2010 (B)	g/m ² /h	0.135
Gas Permeability			
Methane Permeability	BS EN ISO 15105-1	ml/m ² /day/atm	<0.09
Carbon Dioxide Permeability	BS EN ISO 15105-1	ml/m ² /day/atm	<0.09
Radon Permeability	K124/02/95	m ² /s	8.0 x 10 ⁻¹⁵
Compliance and Certification			
CE Mark - EN13967:2012 (A1 2017)			
NHBC Standards Compliant - NHBC ACCEPTS (3894)			
Conforms to BS 8485:2015 + A1 2019			
BBA Certified - Certificate No. 20/5728			

Contact us to find out more information.
info@juta.co.uk | 01772 754177 | JUTA.CO.UK
 Melton Grove Works, Church Road, Lytham, FY8 5PL



Additional Information

HANDLING

Roll weights can be in excess of 20kg and hence appropriate care and equipment is required for unloading and handling.

STORAGE

Rolls of JUTA GP® 1 should be stored on stable/level ground and stacked not more than five rolls high, with no other material stacked on top. The rolls can be stored outdoors when packaged, but should be protected from exposure to UV.

INSTALLATION

JUTA GP® 1 should be installed in accordance with the product installation guidelines, and in accordance with BS 8485:2015.

JOINTING AND SEALING

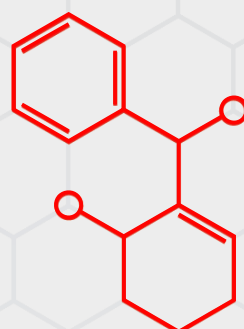
It is recommended JUTA GP® 1 be heat welded where possible, with welding carried out by competent personnel with suitable qualifications in accordance with best practice, and guidance contained within BS 8485:2015. JUTA GP® 1 should be overlapped by at least 100mm. If taping joints, only suitable tape must be used, ensuring application with a silicone roller to remove trapped air. JUTA pre-formed details, or Self Adhesive Gas Membrane are available for sealing around protruberances.

ACCESSORY PRODUCTS

-  JUTA GP® 1 Starter Band
-  JUTA GP® Tape
-  JUTA GP® 1 - Self Adhesive Membrane
-  JUTA GP® Primer
-  JUTA GP® Top Hats and Preformed Corners
-  JUTA GP® Protection Fleece
-  JUTA GP® Void Vent (25/40mm)

PLEASE CONTACT JUTA UK DIRECTLY FOR MORE INFORMATION ON JUTA GP® 1

Contact us to find out more information.
info@juta.co.uk | 01772 754177 | JUTA.CO.UK
Melton Grove Works, Church Road, Lytham, FY8 5PL



JUTA



riba
product
selector